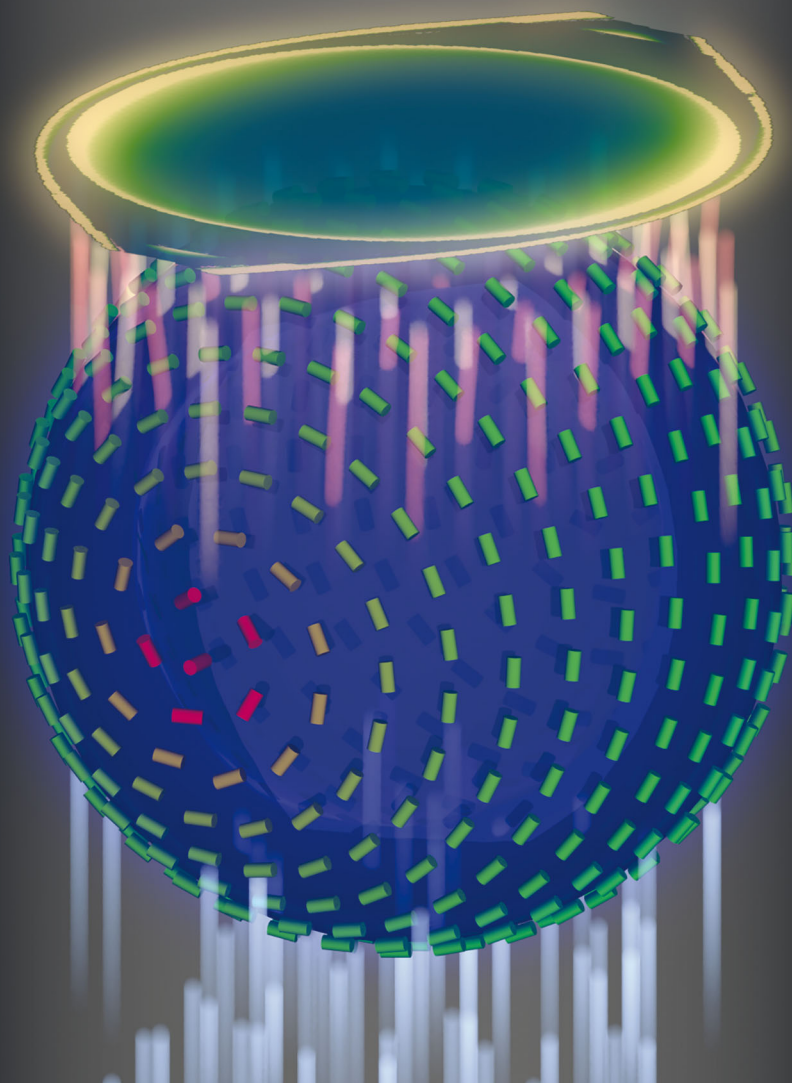


# Soft Matter

rsc.li/soft-matter-journal



ISSN 1744-6848



ROYAL SOCIETY  
OF CHEMISTRY

Celebrating  
IYPT 2019

**PAPER**

Guilhem Poy and Slobodan Žumer  
Ray-based optical visualisation of complex birefringent  
structures including energy transport



Cite this: *Soft Matter*, 2019, 15, 3659

# Ray-based optical visualisation of complex birefringent structures including energy transport†

Guilhem Poy \* and Slobodan Žumer 

We propose an efficient method to simulate light propagation in lossless and non-scattering uniaxial birefringent media, based on a standard ray-tracing technique supplemented by a newly-derived transport equation for the electric field amplitude along a ray and a tailored interpolation algorithm for the reconstruction of the electromagnetic fields. We show that this algorithm is accurate in comparison to a full solution of Maxwell's equations when the permittivity tensor of the birefringent medium typically varies over a length much bigger than the wavelength. We demonstrate the usefulness of our code for soft matter by comparing experimental images of liquid crystal droplets with simulated bright-field optical micrographs, and conclude that our method is more general than the usual Jones method, which is only valid under polarised illumination conditions. We also point out other possible applications of our method, including liquid crystal based flat element design and diffraction pattern calculations for periodic liquid crystal samples.

Received 4th December 2018,  
Accepted 21st March 2019

DOI: 10.1039/c8sm02448k

[rsc.li/soft-matter-journal](http://rsc.li/soft-matter-journal)

## 1 Introduction

Liquid crystal (LC) phases are always associated with an orientational order: the molecules inside a mesoscopic volume are oriented around the same direction  $\mathbf{n}$ , called the director.<sup>1,2</sup> Because of this orientational order, LCs have an anisotropic permittivity tensor at optical frequencies, *i.e.* they are birefringent fluids. Together with the easy reorientation of  $\mathbf{n}$  under external electric fields, this fundamental optical property is at the core of the most successful technological applications of LCs<sup>3</sup> (LC displays, phase retarders, spatial light modulators...), in which light propagates through simple director fields manipulated with external voltages.

In the past ten years, major developments in the field of soft matter have unlocked the possibility to create and control even more complex birefringent structures useful for advanced light applications: without being exhaustive, one can mention tunable LC microresonators,<sup>4</sup> laser-directed patterns of cholesteric fingers allowing one to generate optical phase singularities,<sup>5</sup> photoaligned chiral superstructures with application to diffraction gratings and lasing,<sup>6</sup> and beam shaping using LC micro-optical elements with engineered Pancharatnam–Berry phases.<sup>7</sup>

Having access to the orientational field of these complex birefringent structures is essential for a better theoretical understanding of these systems and for the design of new optical devices. If the birefringent structure under consideration is quasi two-dimensional (Langmuir layers, smectic films...), one can use standard polarised light microscopy techniques to fully reconstruct the director field:<sup>8</sup> by illuminating the sample with polarised light and collecting with a camera the reflected or transmitted light through a lens and an analyser, one can generally find a link between the measured intensity and the local orientation of the director. The images measured with such techniques are called polarised optical micrographs (POMs), a term which also encompasses images measured in other polarised microscopy setups (only one polariser or analyzer, presence of a half-wave or quarter-wave plate...).

If the birefringent structure under consideration is fully three-dimensional, the POMs generally depend on the focal setting of the microscope and one cannot directly measure  $\mathbf{n}$  using these simple microscopy techniques. To fully reconstruct the three dimensional director field, three possibilities can be envisioned: either a direct experimental measurement using tomography techniques (fluorescence confocal polarised microscopy<sup>9</sup> or multiphoton imaging techniques<sup>10</sup>), a numerical simulation with a minimization of the free energy of the system,<sup>11,12</sup> or a hybrid experimental/numerical method recently developed by Posnjak *et al.*<sup>13</sup> The first and third possibilities have the advantage of being *in situ* measurements, but also have a major limitation: the birefringence of the LC must be very

Faculty of Mathematics and Physics, University of Ljubljana, Jadranska 19, 1000 Ljubljana, Slovenia. E-mail: [guilhem.poy@fmf.uni-lj.si](mailto:guilhem.poy@fmf.uni-lj.si); Tel: +33 7 86 09 07 39  
 † Electronic supplementary information (ESI) available: The code of the numerical method presented in this article will be publicly disseminated mid-2019 as part of a general platform for light propagation in LCs. See DOI: 10.1039/c8sm02448k



small in order to avoid optical artefacts. The second possibility does not suffer from such a limitation, but necessitates accurate values of the material constants present in the expression of the free energy.

In any case, one should always try to validate the reconstructed director field by simulating what it would look like under a real microscope and comparing the simulated images with the experimental POMs of the structure under consideration. The most widely adopted method to simulate POMs is the Jones method:<sup>3</sup> in this method, the polarisation state of light is represented by a vector of size 2 which is propagated in one direction through the birefringent medium using 2-by-2 transfer matrices depending on the given director field. However, this method suffers from two important limitations: first, the sample is assumed to be illuminated by a single plane wave, although this is generally not the case under a real microscope;<sup>14</sup> second, light does not propagate in a straight line inside birefringent media, but can be deflected due to the spatial variation of  $\mathbf{n}$ .<sup>15</sup> The first limitation implies that the Jones method is unable to predict the effect of the numerical aperture and focusing optics of the microscope on the POMs, and the second limitation implies that the Jones method cannot simulate bright-field optical micrographs (BFOM) obtained when the sample is observed with unpolarised light without any polariser or analyser.‡

Although the first limitation can be easily addressed by using a generalised Jones method,<sup>14</sup> the situation concerning the second issue is more complicated. The finite-difference time-domain method can be used to directly solve Maxwell's equations in a birefringent medium,<sup>16</sup> but this approach can be computationally very intensive for large 3D domains. More efficient ray-tracing methods<sup>15,17</sup> have been extensively studied in anisotropic media, but all studies in the literature either focus on simple 2D geometries<sup>18,19</sup> or do not propose a reconstruction of the electromagnetic field amplitudes.<sup>20,21</sup> Beam propagation<sup>22</sup> and eikonal methods<sup>23</sup> have also been used to fully calculate the electromagnetic fields inside complex 3D birefringent systems, but these approaches are not very efficient if one wants to compute light transmission in samples surrounded by thick isotropic layers such as glass plates: since light is deflected by the birefringent medium, one would need a prohibitively large computational domain in order to contain the full extent of the light wave.§ In addition, the eikonal propagation equation becomes highly singular when the deflection effects are too important,<sup>24</sup> which complicates the numerical integration.

In this paper, we present a novel numerical method for the propagation of light in uniaxial birefringent samples, with two

important features: fast and accurate reconstruction of the electromagnetic fields inside the sample, as well as the possibility to simulate POMs and BFOMs even when the sample is surrounded with thick isotropic layers.

The plan of the paper is as follows. In Section 2, we describe the theoretical framework and numerical implementation of our method, which is based on a ray-tracing technique supplemented by transport equations for the wave amplitudes and an efficient interpolation algorithm to calculate the electromagnetic fields. In Section 3, we validate our method with a comparison against a full solution of Maxwell's equations. In Section 4, we use our method to calculate the BFOM of a LC droplet, which we compare with experimental micrographs of the same droplet. Finally, we draw our conclusions in Section 5.

## 2 Ray-tracing method including energy transport

In this section, we explicitly describe our ray-tracing method allowing a full reconstruction of the electric and magnetic fields inside the uniaxial birefringent medium. First, we will compute the polarisation basis of each transverse mode of the electric and magnetic fields. Second, we will derive the Hamiltonian ray-tracing equations for each of these modes. Third, we will derive simple equations for the transport of energy and the associated conservation laws allowing the computation of the amplitude of the transverse modes. Finally, we will present the details of our numerical implementation.

### 2.1 WKB expansion and polarisation bases

We use the usual notation for the Maxwell fields:  $\mathbf{E}$  and  $\mathbf{B}$  for the electric and magnetic fields, and  $\mathbf{D} = \varepsilon_0 \boldsymbol{\varepsilon} \mathbf{E}$  for the displacement field. Here,  $\varepsilon_0$  (resp.  $\mu_0$ ) is the permittivity (resp. permeability) of empty space and  $\boldsymbol{\varepsilon}$  is the tensorial relative permittivity. As we will only consider uniaxial birefringent media, this tensor has the following expression:

$$\boldsymbol{\varepsilon} = \varepsilon_{\parallel}(\mathbf{n} \otimes \mathbf{n}) + \varepsilon_{\perp}(\mathbf{I} - \mathbf{n} \otimes \mathbf{n}),$$

with  $\mathbf{I}$  the identity operator,  $\mathbf{n}$  the optical axis (normalised to 1), and  $\varepsilon_{\parallel}$  ( $\varepsilon_{\perp}$ ) the relative permittivity along (orthogonal to)  $\mathbf{n}$ .

We assume that the fields oscillate at a single angular frequency  $\omega$  and that the wavelength  $\lambda = 2\pi c/\omega$  is much smaller than the typical length  $L$  over which  $\boldsymbol{\varepsilon}$  varies in the plane orthogonal to the propagation axis.¶ Under these assumptions, the wave equation for the electric field<sup>3</sup> can be put into the following form:

$$\eta^2 \tilde{\nabla} \times \tilde{\nabla} \times \mathbf{E} + \boldsymbol{\varepsilon} \mathbf{E} = 0, \quad (1)$$

with  $\eta \equiv 1/(ik_0 L)$  the complex “smallness” parameter,  $k_0 \equiv 2\pi/\lambda$  the wave vector in empty space, and  $\tilde{\nabla} \equiv L \nabla$  the dimensionless gradient.

¶ This length can be rigorously defined as  $L = \|\boldsymbol{\varepsilon}\|_{\infty} / \|\nabla_{\perp} \boldsymbol{\varepsilon}\|_{\infty}$ , with  $\nabla_{\perp}$  the gradient in the plane orthogonal to the propagation axis and  $\|\mathbf{T}\|_{\infty}$  the maximum value of any component of a tensor field  $\mathbf{T}$ .

‡ In the Jones method, only the polarisation state of light changes along the rays. This implies that the Jones method will always predict a transmission of 1 in bright-field microscopy.

§ Note that for the beam propagation method, the memory cost can still be acceptable since the propagation can be done layer by layer in the propagation direction  $z$  (only two-dimensional arrays are therefore kept in the computer memory); but for propagation distance  $> 1$  mm, this method still takes a lot of time since a great number of steps in the  $z$ -direction are needed.



Since the smallness parameter appears in front of the derivative of highest order, the standard method for solving such an equation is the so-called Wentzel–Kramers–Brillouin (WKB) method.<sup>25</sup> More precisely, we use the following asymptotic expansion for the electric field:

$$\mathbf{E} = \exp\left[\frac{\phi}{\eta} - i\omega t\right] \sum_{n=0}^{\infty} \eta^n \mathbf{E}_n, \quad (2)$$

and we define the eikonal function  $\psi = L\phi$  so that the phase term in eqn (2) can be written as  $i(k_0\psi - \omega t)$ . Throughout this article, the amplitudes  $\mathbf{E}_n$  and eikonal function  $\psi$  are assumed to depend on the spatial position  $\mathbf{r}$ . The validity of the WKB expansion relies on the smallness of  $\eta$ , which physically corresponds to systems where  $L \gg \lambda$ . Note that the asymptotic expansions for the other fields can be obtained from eqn (2) by replacing  $\mathbf{E}$  with the appropriate symbols ( $\mathbf{B}$  or  $\mathbf{D}$ ). By injecting eqn (2) into eqn (1), we obtain at order 0 and 1 in  $\eta$ :

$$\mathbf{L}_p \mathbf{E}_0 = 0, \quad (3)$$

$$\mathbf{L}_p \mathbf{E}_1 + \mathbf{D}_p \mathbf{E}_0 = 0, \quad (4)$$

where we defined the linear operators  $\mathbf{L}_p$  and  $\mathbf{D}_p$  as:

$$\mathbf{L}_p \bullet = [\mathbf{p} \otimes \mathbf{p} - |\mathbf{p}|^2 \mathbf{I} + \boldsymbol{\varepsilon}] \bullet, \quad (5)$$

$$\mathbf{D}_p \bullet = \tilde{\nabla} \times (\mathbf{p} \times \bullet) + \mathbf{p} \times (\tilde{\nabla} \times \bullet), \quad (6)$$

with  $\mathbf{p} \equiv \nabla\psi = \tilde{\nabla}\phi$  the dimensionless wave vector  $\mathbf{k}/k_0$ . As will become apparent later, eqn (3) allows one to calculate the direction of  $\mathbf{E}_0$  and eqn (4) allows one to reconstruct the amplitude of  $\mathbf{E}_0$ . Note that eqn (4) also allows one to compute the first-order correction  $\mathbf{E}_1$ , but for simplicity's sake we will only keep the zeroth order term in the reconstructed electric field.

For now, let us examine the zeroth-order eqn (3). This equation admits a non-trivial solution if and only if the determinant of  $\mathbf{L}_p$  is zero. After some algebra, we find that this condition is equivalent to the following equation:

$$(|\mathbf{p}|^2 - \varepsilon_{\perp})(\varepsilon_{\perp} |\mathbf{p}|^2 + \varepsilon_a [\mathbf{n} \cdot \mathbf{p}]^2 - \varepsilon_{\parallel} \varepsilon_{\perp}) = 0,$$

with  $\varepsilon_a \equiv \varepsilon_{\parallel} - \varepsilon_{\perp}$ .

We therefore retrieve the well-known eigenvalue equation for the ordinary and extraordinary modes in a uniaxial birefringent medium.<sup>1</sup> In the following, we will indicate with an (o) index all quantities associated with the ordinary mode – which must fulfill the condition  $|\mathbf{p}^{(o)}|^2 = \varepsilon_{\perp}$  – and with an (e) index all quantities associated with the extraordinary mode – which must fulfill the condition  $\varepsilon_{\perp} |\mathbf{p}^{(e)}|^2 + \varepsilon_a [\mathbf{n} \cdot \mathbf{p}^{(e)}]^2 = \varepsilon_{\parallel} \varepsilon_{\perp}$ .

We can now easily obtain for each mode the polarisation states of  $\mathbf{E}_0$ ,  $\mathbf{D}_0$  and  $\mathbf{B}_0$ , as well as the direction of the Poynting vector  $\mathbf{S}_0 \equiv \mu_0 \mathbf{E}_0 \times \mathbf{B}_0$ . Let us define  $\mathbf{u}_x^{(\alpha)} \equiv \mathbf{X}_0^{(\alpha)} / |\mathbf{X}_0^{(\alpha)}|$ , with  $\alpha = e$  or  $o$  and  $\mathbf{X}_0 = \mathbf{E}_0$ ,  $\mathbf{D}_0$ ,  $\mathbf{B}_0$ , or  $\mathbf{S}_0$ . We compute the expressions of the vectors  $\mathbf{u}_x^{(\alpha)}$  by writing that  $\mathbf{E}_0$  must be in the kernel of  $\mathbf{L}_p$  (cf. eqn (3)) and by developing the Maxwell equations at the lowest order in  $\eta$ . Since the fully covariant form of these vectors is a bit lengthy, we refer to Section S0 of the ESI† for the final result of this calculation. Here, we will simply mention that the

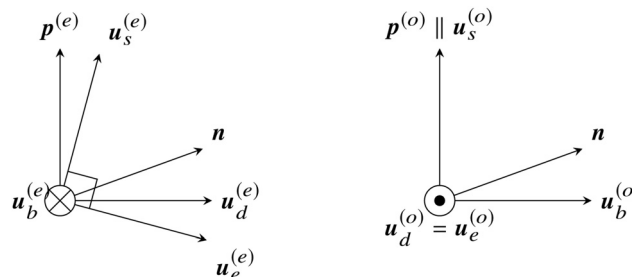


Fig. 1 Unit vectors representing the orientation of the fields  $\mathbf{E}_0$ ,  $\mathbf{D}_0$ ,  $\mathbf{B}_0$  and  $\mathbf{S}_0$  with respect to  $\mathbf{p}$  and  $\mathbf{n}$  for the extraordinary mode (left) and ordinary mode (right). All vectors except  $\mathbf{u}_b^{(e)}$  and  $\mathbf{u}_d^{(o)} = \mathbf{u}_e^{(o)}$  are in the plane of the paper.

expressions of these vectors only depend on the optical axis  $\mathbf{n}$ , the dimensionless wave vectors  $\mathbf{p}^{(e)}$  and  $\mathbf{p}^{(o)}$ , and the effective relative permittivity along the propagation axis  $\varepsilon^{(\alpha)} \equiv [\mathbf{p}^{(\alpha)} \cdot \mathbf{u}_s^{(\alpha)}]^2$  for the extraordinary ( $\alpha = e$ ) and ordinary ( $\alpha = o$ ) modes. The expressions of these effective relative permittivities are  $\varepsilon^{(e)} \equiv \varepsilon_{\perp}$  and:

$$\varepsilon^{(e)} = \frac{\varepsilon_{\parallel} \varepsilon_{\perp}^2}{\varepsilon_{\perp}^2 + \varepsilon_a [\mathbf{n} \cdot \mathbf{p}^{(e)}]^2}. \quad (7)$$

To summarize, we have obtained in this subsection the normalized directions of the electric, displacement, magnetic and Poynting fields in both extraordinary and ordinary eigenmodes. The orientation of these vectors is recapitulated in Fig. 1. Note that to fully reconstruct  $\mathbf{E}$ ,  $\mathbf{D}$ ,  $\mathbf{B}$  and  $\mathbf{S}$  at the lowest order in  $\eta$  using eqn (2), we still need to find a method to compute the scalar amplitude of these fields as well as the  $\psi^{(e)}$  and  $\psi^{(o)}$  fields (from which we can deduce the phase of the Maxwell fields and the renormalised wave vectors  $\mathbf{p}^{(e)}$  and  $\mathbf{p}^{(o)}$ ). These two points are addressed in the next sections.

## 2.2 Hamiltonian flow and ray-tracing

To reconstruct the eikonal functions  $\psi^{(e)}$  and  $\psi^{(o)}$ , let us introduce the concept of a ray, defined as an integral curve (also called a field line) of the vector field  $\mathbf{u}_s^{(e)}$  (extraordinary ray) or  $\mathbf{u}_s^{(o)}$  (ordinary ray) – the directions in which the energy flows, since these vector fields correspond to the renormalised Poynting vector field associated with each eigenmode. Our strategy here is to compute a great number of these rays inside the sample by using  $\psi^{(e)}$  (resp.,  $\psi^{(o)}$ ) itself as the natural parametrisation for each extraordinary (resp., ordinary) ray. The trajectory of each ray is computed thanks to a Hamiltonian ray-tracing method<sup>20</sup> similar to the method of Sluijter *et al.*,<sup>20</sup> with two small improvements:

- All the formulae presented below are in a covariant form, contrary to Sluijter's formulas which are expressed in the principal coordinate system of the birefringent system.
- Sluijter *et al.* derived the ray-tracing equations directly from the eigenvalue equation for  $\mathbf{p}^{(e)}$  and  $\mathbf{p}^{(o)}$ , and then showed

† Usually, ray-tracing is done by solving the Euler–Lagrange equation of a minimization problem<sup>15</sup> (i.e. by using the Lagrangian formalism). Here, we prefer to use Hamiltonian dynamics because the involved expressions are much simpler and easier to solve numerically.



that these equations have a Hamiltonian form. Here, we prefer to directly derive the Hamiltonian formulation of these equations from the Fermat principle, which has the double advantage of making the link with the century-old theory of Fermat–Grandjean<sup>15</sup> and showing that the natural parametrisation for this problem is the optical length  $\bar{s}$  – the difference  $\Delta\psi^{(\alpha)}$  ( $\alpha = e$  or  $o$ ) between the value of the eikonal function at the considered point and the value of the same function at the starting point of the ray (for simplicity's sake, we do not use an  $(e)$  or  $(o)$  index for  $\bar{s}$  since it can be inferred from other terms in each equation).

Since this derivation is quite technical, we refer to Section S1 of the ESI† for the full calculation, whose main result is the following expressions for the two Hamiltonian functions associated with extraordinary and ordinary rays:

$$\mathcal{H}^{(e)}(\mathbf{r}, \mathbf{p}) = \frac{\varepsilon_{\perp} |\mathbf{p}|^2 + \varepsilon_a [\mathbf{n}(\mathbf{r}) \cdot \mathbf{p}]^2}{2\varepsilon_{\parallel} \varepsilon_{\perp}}, \quad \mathcal{H}^{(o)}(\mathbf{r}, \mathbf{p}) = \frac{|\mathbf{p}|^2}{2\varepsilon_{\perp}}.$$

In these definitions,  $\mathbf{r}$  corresponds to the spatial position of a virtual bullet propagating along the ray and  $\mathbf{p}$  is the conjugate moment of  $d\mathbf{r}/d\bar{s}$ , with  $\bar{s}$  the optical length defined above. Tracing a ray (*i.e.* computing its spatial trajectory) is fully equivalent to propagating the virtual bullet parametrized by  $\mathbf{r}$ , which we will call the “end point of the ray” in the following.

The ray-tracing equations for the extraordinary rays are then simply obtained from the Hamilton equations associated with  $\mathcal{H}^{(e)}$ :

$$\frac{d\mathbf{r}}{d\bar{s}} = \frac{\partial \mathcal{H}^{(e)}}{\partial \mathbf{p}} = \frac{\varepsilon_{\perp} \mathbf{p} + \varepsilon_a [\mathbf{n}(\mathbf{r}) \cdot \mathbf{p}] \mathbf{n}(\mathbf{r})}{\varepsilon_{\parallel} \varepsilon_{\perp}}, \quad (8)$$

$$\frac{d\mathbf{p}}{d\bar{s}} = -\frac{\partial \mathcal{H}^{(e)}}{\partial \mathbf{r}} = -\frac{\varepsilon_a [\mathbf{n}(\mathbf{r}) \cdot \mathbf{p}]}{\varepsilon_{\parallel} \varepsilon_{\perp}} [\nabla \mathbf{n}] \cdot \mathbf{p}. \quad (9)$$

Note that when  $\{\mathbf{r}, \mathbf{p}\}$  is a solution of eqn (8) and (9), the following identities are verified:

$$\mathcal{H}^{(e)} = \frac{1}{2}, \quad \mathbf{p} = \mathbf{p}^{(e)}, \quad \frac{d\mathbf{r}}{d\bar{s}} = \frac{\mathbf{u}_s^{(e)}}{\sqrt{\varepsilon^{(e)}}}.$$

Similarly, the ray-tracing equations for the ordinary rays are obtained from the Hamilton equations associated with  $\mathcal{H}^{(o)}$ :

$$\frac{d\mathbf{r}}{d\bar{s}} = \frac{\partial \mathcal{H}^{(o)}}{\partial \mathbf{p}} = \frac{\mathbf{p}}{\varepsilon_{\perp}}, \quad (10)$$

$$\frac{d\mathbf{p}}{d\bar{s}} = -\frac{\partial \mathcal{H}^{(o)}}{\partial \mathbf{r}} = 0. \quad (11)$$

When  $\{\mathbf{r}, \mathbf{p}\}$  is a solution of eqn (10) and (11), the following identities are verified:

$$\mathcal{H}^{(o)} = \frac{1}{2}, \quad \mathbf{p} = \mathbf{p}^{(o)}, \quad \frac{d\mathbf{r}}{d\bar{s}} = \frac{\mathbf{u}_s^{(o)}}{\sqrt{\varepsilon_{\perp}}}.$$

Note that we neglected a possible spatial dependence of the refractive indices in eqn (8)–(11). If taken into account, this dependence leads to additional terms in the equations for  $d\mathbf{p}/d\bar{s}$ . Although such terms are really not difficult to take into account in the numerical code, we will assume here for simplicity's sake that they are negligible.

Since it is shown in Section S1 of the ESI† that  $\bar{s}$  can be directly identified with  $\Delta\psi^{(e)}$  or  $\Delta\psi^{(o)}$  depending on the type of ray, the eikonal functions can be calculated along the rays by directly integrating the ray-tracing equations (8)–(11), on the condition that a suitable set of initial conditions is given – the values of  $\mathbf{p}^{(\alpha)}$  and  $\psi^{(\alpha)}$  ( $\alpha = e$  or  $o$ ) need to be specified on the surface defining the light source (*i.e.* the object of origin for all rays).

### 2.3 Conservation laws along a ray

The last step to fully reconstruct the Maxwell fields is to find a way of computing the amplitudes of these fields at order 0 in the WKB expansion. This can be done by eliminating  $E_1$  from the first-order term in the WKB expansion of the wave equation (eqn (4)). To simplify this elimination process, we neglect all energy exchange between the extraordinary and ordinary modes. This corresponds to the so-called adiabatic regime, which in our formalism is equivalent to saying that  $E^{(e)}$  and  $E^{(o)}$  separately verify eqn (4):

$$\mathbf{L}_{p^{(\alpha)}} E_1^{(\alpha)} + \mathbf{D}_{p^{(\alpha)}} E_0^{(\alpha)} \approx 0, \quad \alpha = e \text{ or } o \quad (12)$$

The error made by setting the left-hand-side of eqn (12) to zero is of order  $\mathcal{O}(1/M)$ , where we defined the Mauguin number  $M = k_0 \Delta n_{\text{eff}} / q_{\text{eff}}$  with  $\Delta n_{\text{eff}} = \sqrt{\varepsilon^{(e)}} - \sqrt{\varepsilon^{(o)}}$  and  $q_{\text{eff}} = \{[\mathbf{u}_s^{(o)} \cdot \nabla] \mathbf{u}_e^{(o)}\} \cdot \mathbf{u}_b^{(o)}$  the effective twist of the polarisation vectors along the propagation axis.<sup>26</sup> Neglecting all energy exchange between the extraordinary and ordinary modes is therefore equivalent to the condition  $M \gg 1$ , which we will assume in the following.

Using the fact that  $\mathbf{u}_e^{(\alpha)}$  is in the kernel of  $\mathbf{L}_{p^{(\alpha)}}$ , we can eliminate  $E_1^{(\alpha)}$  from eqn (12) by taking the scalar product of this equation with  $\mathbf{u}_e^{(\alpha)}$ . After some simplifications, we then find:

$$2\varepsilon^{(\alpha)} \frac{dE_0^{(\alpha)}}{d\bar{s}} + \left[ \nabla \cdot \left( \sqrt{\varepsilon^{(\alpha)}} \mathbf{u}_s^{(\alpha)} \right) \right] E_0^{(\alpha)} = 0, \quad \alpha = e \text{ or } o. \quad (13)$$

Eqn (13) corresponds to two first-order ordinary differential equations (ODE) for the amplitudes  $E_0^{(e)}$  and  $E_0^{(o)}$  along a ray. Instead of directly integrating these ODEs to reconstruct the field amplitudes, we show that this system of equations is associated with two conserved quantities (one for each eigenmode of the electric field), each depending on the field amplitude, the effective optical index and the so-called geometrical spreading – a quantity of major importance in the theoretical and numerical analysis of seismic waves and light propagation in isotropic media.<sup>24</sup> Searching for conserved quantities is a better strategy than directly solving the ODEs in eqn (13) because it leads to more accurate results (no propagation of errors).

More specifically, we introduce the geometrical spreadings  $q^{(\alpha)} \equiv \det[\mathbf{J}^{(\alpha)}]$  associated with each collection of rays ( $\alpha = e$  or  $o$ ), where we defined the Jacobian matrices  $\mathbf{J}^{(e)}$  and  $\mathbf{J}^{(o)}$  as:

$$J_{ij}^{(\alpha)}(\bar{s}, \mathbf{x}_0) = \frac{\partial r_i^{(\alpha)}}{\partial x_{0j}}(\bar{s}, \mathbf{x}_0), \quad \alpha = e \text{ or } o. \quad (14)$$

In this definition,  $\mathbf{r}^{(e)}(\bar{s}, \mathbf{x}_0)$  and  $\mathbf{r}^{(o)}(\bar{s}, \mathbf{x}_0)$  correspond to the Lagrangian trajectories of the extraordinary and ordinary rays



starting at  $\mathbf{x}_0$  and computed from the ray-tracing equations of the previous section.

The geometrical spreadings  $q^{(e)}$  and  $q^{(o)}$  obey the following differential equations:

$$\frac{dq^{(\alpha)}}{d\bar{s}} = q^{(\alpha)} \left[ \nabla \cdot \left( \frac{\mathbf{u}_s^{(\alpha)}}{\sqrt{\varepsilon^{(\alpha)}}} \right) \right], \quad \alpha = e \text{ or } o. \quad (15)$$

The proof of these transport equations is given in Section S2 of the ESI.† Here, we focus on their physical interpretation: when the extraordinary or ordinary rays are locally converging (resp., diverging), the associated divergence term in eqn (15) is negative (resp., positive) and therefore the associated geometrical spreading decreases (resp., increases). This observation is confirmed by the fact that the geometrical spreading can be interpreted as the change of volume of an infinitesimal cube whose vertices are transported along the rays (see Fig. 2).

By combining the transport equations for  $E^{(\alpha)}$  and  $q^{(\alpha)}$  (eqn (13) and (15)) and by using the Leibniz formula for the divergence, we finally find the following conservation laws:

$$\frac{d\mathcal{F}^{(\alpha)}}{d\bar{s}} = 0, \quad \alpha = e \text{ or } o.$$

where we defined

$$\mathcal{F}^{(\alpha)} = E_0^{(\alpha)} \sqrt{q^{(\alpha)} \varepsilon^{(\alpha)}}, \quad \alpha = e \text{ or } o.$$

Assuming that the amplitudes  $E_0^{(e)}$  and  $E_0^{(o)}$  are specified on the reference surface defining the light source, one can directly compute the values of the conserved quantities  $\mathcal{F}^{(e)}$  and  $\mathcal{F}^{(o)}$  and then deduce  $E_0^{(e)}$  and  $E_0^{(o)}$  in the rest of the sample using the following equation:

$$E_0^{(\alpha)} = \frac{\mathcal{F}^{(\alpha)}}{\sqrt{q^{(\alpha)} \varepsilon^{(\alpha)}}}, \quad \alpha = e \text{ or } o. \quad (16)$$

Based on the previous discussion on the physical interpretation of  $q^{(e)}$  and  $q^{(o)}$ , eqn (16) has a very clear meaning: when the rays are converging (resp., diverging), the geometrical spreading will decrease (resp., increase) and therefore the amplitude of the electric field will increase (resp., decrease).

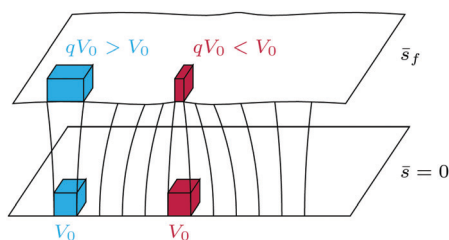


Fig. 2 The geometrical spreading  $q$  is related to the change of volume of an infinitesimal cube advected along the light rays. In this figure, we represent a simplified situation where the geometrical spreading is initially 1 and then increases or decreases depending on the converging or diverging behavior of the rays.

## 2.4 Details of the numerical implementation

In the last three sections, we presented all the equations necessary to reconstruct the polarisation state (Section 2.1), the eikonal function (Section 2.2) and the amplitude (Section 2.3) of the electric field at the lowest order in the WKB expansion. We now propose a numerical scheme allowing one to efficiently solve these equations.

Our target system will consist of two parallel isotropic plates enclosing either a birefringent medium or a suspension of birefringent droplets in an isotropic fluid. Fig. 3 schematizes these two types of system. In each case, the light source corresponds to an incident plane wave below the sample.\*\* The birefringent structure is specified by its orientational field  $\mathbf{n}$ , which can be obtained from a theoretical model, a numerical simulation or an experiment. The field  $\mathbf{n}$  is internally represented in our code as a  $C^1$  mapping using tricubic interpolation.<sup>27</sup> Instead of copying by hand the general formula for the interpolation kernel (>300 lines of code), we automatically generated the associated C code with a symbolic calculation in Mathematica using the centered finite-difference approximation for the derivatives.

To propagate the rays across the sample, we define a target plane containing the current end points of all rays. This target plane is always parallel to the source plane and is moved in the upward direction  $\mathbf{e}_3$  (see Fig. 3) by small increments. To fully reconstruct the electric and magnetic field in the bulk of the sample, we associate a 2D regular grid with the target plane and we use the following iterative procedure:

(A1) Initial setup of the rays on the source plane; the target plane is initially aligned with the source plane.

(A2) While the target plane has not reached the end of the sample, do the following steps:

(A2.1) Move the target plane with a small vertical increment and propagate the rays until they cross the new position of the target plane.

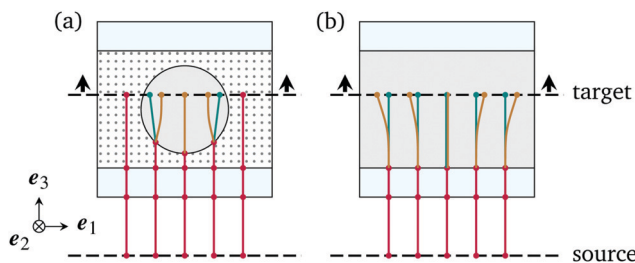
(A2.2) Reconstruct the electric and magnetic field at the new end points of the rays.

(A2.3) Interpolate the values of the electric and magnetic field on the regular grid associated with the target plane.

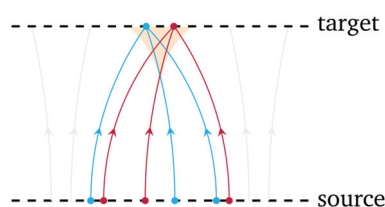
A detailed description of the steps (A1) and (A2.1–2.3) is available in Section S3 of the ESI.† Here, we will only mention two subtleties in our algorithm. First, each interface of discontinuity of the optical index produces reflected and transmitted rays, which means that the number of rays at each point of the sample is theoretically infinite. In our code, we only take into account transmitted rays propagating forward in the sample and apply the full Fresnel boundary conditions at each interface to update the amplitude, polarisation and phase of the rays. Second, the last step (A2.3) of the main loop of our algorithm is more complicated than it appears because the

\*\* Note that our method can support more complicated light sources such as a Gaussian beam or a tilted plane wave. For these general light sources, the initialization is however a bit more complicated since one needs to specify inhomogeneous distributions on the source plane for the eikonal functions, rescaled wavevectors and initial amplitudes.





**Fig. 3** The numerical implementation of our improved ray-tracing method considers two types of system in which light is propagated: (a) a birefringent droplet (gray color) suspended in an isotropic medium (dotted domain) or (b) a slab of constant thickness of a birefringent medium (gray color again). In both cases, two parallel isotropic plates (blue rectangles) are used to contain the sample. We assume that the incident light is a plane wave, in which case the surface defining the light source is just a reference plane below the sample. Rays (in red if isotropic, in green if ordinary, in brown if extraordinary) are propagated in the sample by pushing upward a target plane containing the end points of the rays. Special care is taken when a surface of discontinuity of the optical index is encountered, as explained in the main text.



**Fig. 4** When the deflection effect is strong, rays of the same family can cross each other, as represented in this figure. In the white domain, there is a one-to-one correspondence between points of this domain and source points on the reference plane. In the red domain (where rays are crossing each other), each target point is associated with three possible source points, as illustrated by the blue and red rays.

local value of the electric field at a point  $P$  of the target plane is obtained by summing all contributions from rays arriving at  $P$ . When deflection effects are important, several rays from the same family (extraordinary, ordinary or isotropic) can contribute to the local value of the electric field, as illustrated in Fig. 4. The surface separating the white domain (one-to-one correspondence between the source and target planes) from the red domain (multiple-to-one correspondence between the source and target planes) in Fig. 4 is called a caustic, and the red region itself is called a caustic domain. Reconstructing the full electric and magnetic fields inside caustic domains is challenging, but it can still be done efficiently and accurately when elementary caustic domains do not overlap (see Section S3.4 and Section S4 in the ESI<sup>†</sup>).

### 3 Validation of our method on a simple test case

In the previous section, we presented our improved ray-tracing method but did not examine the conditions of validity of such a method. We address this problem here by comparing the

solution obtained with our method with a more exact solution obtained directly from Maxwell's equations with the finite-difference time-domain (FDTD) method. We first present the system on which this comparison is made, and then discuss our results.

#### 3.1 Numerical setup

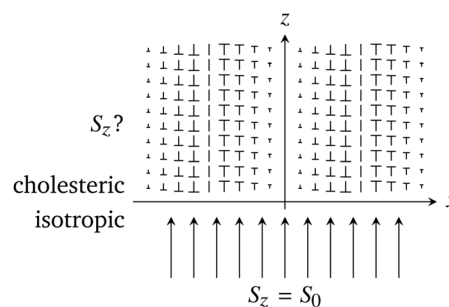
The simple system used in this study consists of an isotropic medium filling the lower half space  $z < 0$  and an undeformed cholesteric helix texture filling the upper half space  $z > 0$ , with the helix axis oriented along the axis  $e_x$ . A schematic representation of this system is visible in Fig. 5. The comparison between our ray-tracing method and FDTD was made on the  $z$ -component  $S_z$  of the time-averaged Poynting vector  $\Re[\mu_0 \mathbf{E} \times \mathbf{B}^*]$  inside the cholesteric domain, when the latter is illuminated from below by a plane-wave of constant intensity  $S_z = S_0$ . The polarisation of incident light was set to  $(e_x + e_y)/\sqrt{2}$  in order to generate both extraordinary and ordinary rays inside the cholesteric domain.

Since we assumed that the cholesteric texture is an undeformed helix oriented along  $e_x$ , the director field can be expressed as:

$$\mathbf{n}(x, y, z > 0) = \cos\left[\frac{2\pi x}{P}\right] e_y + \sin\left[\frac{2\pi x}{P}\right] e_z,$$

with  $P$  the cholesteric pitch. Because of the  $\mathbf{n} \rightarrow -\mathbf{n}$  invariance in a cholesteric, the true periodicity of this system is  $P/2$ , which is why we limited our simulation to the interval  $-P/4 \leq x \leq P/4$ . Furthermore, the director field is invariant in the  $y$ -direction, which was therefore neglected in all our simulations. Both numerical codes (ray-tracing and FDTD) were initialized with the same setup as in Fig. 5 using the director field defined above and the values of the material constants defined in Table 1. From the values in Table 1 and the calculated trajectories of the light rays, we also estimated that the Mauguin number is always greater than 35, which means that the assumption made in Section 2.3 (well-established adiabatic regime) is valid in this system.

The FDTD simulation was done with the open-source code Meep developed by MIT,<sup>16</sup> which includes support for light



**Fig. 5** Test case setup for the comparison between our improved ray-tracing method and a full solution of Maxwell's equations. Tilted molecules in the cholesteric phase are represented by nails proportional in length to the director projection in the plane of the drawing. The nail point is oriented toward the reader.



**Table 1** Values of the wavelength and the material constants for the setup described in Fig. 5.  $n_{\text{iso}}$  corresponds to the optical index of the isotropic domain, and  $n_{\perp}$  ( $n_{\parallel}$ ) corresponds to the ordinary (extraordinary) index of the cholesteric domain

$\lambda$	$P$	$n_{\text{iso}}$	$n_{\perp}$	$n_{\parallel}$
0.5 $\mu\text{m}$	20 $\mu\text{m}$	1	1.45	1.55

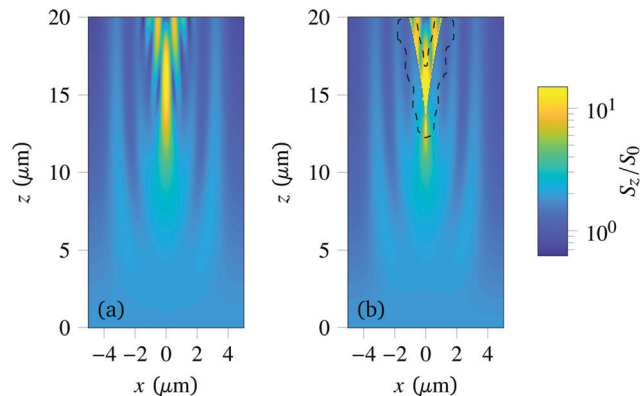
propagation in inhomogeneous uniaxial media. We chose a spatial resolution  $\Delta_f = \lambda/75 \approx 6.7$  nm and an associated time resolution  $T = \Delta_f/(2c)$ , which fulfills the Courant condition for FDTD in 3D<sup>28</sup> ( $cT/\Delta_f \leq 1/\sqrt{3}$ ). We used periodic boundary conditions on the vertical boundaries ( $x = \pm P/4$ ) and perfectly-matched layer (PML) absorbing conditions on the top and bottom boundaries. We stopped the simulation after  $N = 20H/\Delta_f = 6 \times 10^8$  integration steps (with  $H = P$  the length of the mesh in the  $z$  direction), which was sufficient to get good convergence for the time-averaged amplitude of the electric and magnetic fields. Note that the spatial resolution was not chosen randomly but in order to get an accurate solution near the cholesteric/isotropic interface. This was checked by directly comparing the computed solution with an analytical calculation of the Maxwell fields on each side of this interface.

In the ray-tracing method, we used a total of 200 rays and 200 target points to reconstruct the Maxwell fields in the  $xz$ -plane. The target plane (which here corresponds to a line parallel to the  $x$ -axis, since we neglected the invariance axis  $y$ ) was moved upward by increments  $\Delta_f = 50$  nm, which also correspond to the spatial resolution along the  $x$  axis (200 points over a length  $P/2 = 10$   $\mu\text{m}$ ). We emphasize that with our choice of parameters, the rays are never leaving the computational domain, which allows us to easily calculate the Poynting vector everywhere inside the latter without having to resort to periodic boundary conditions on the vertical boundaries.

Finally, note that both methods were parallelised in order to benefit from the multiple CPU cores available on the simulation desktop computer. For the FDTD code Meeq, the parallelisation was done using MPI (a distributed model with communication between the parallel processes). For our ray-tracing method, the parallelisation was done using OpenMP (a shared memory model without any communication between the threads) by evolving in parallel multiple rays.

### 3.2 Results and discussion

Fig. 6 shows two density plots of  $S_z/S_0$  computed with the FDTD method (Fig. 6a) and our ray-tracing method (Fig. 6b). The agreement between the two methods is visually very good, especially for the low-intensity elongated bands near the vertical boundaries of the computational domain. Note that the contrast of these bands is not due to an exchange of energy between the extraordinary and ordinary waves (which we neglected in Section 2.3), but is simply caused by interference between these two waves. This interference is possible because the polarisation of an extraordinary ray at a given point is not orthogonal to the polarisation of the associated ordinary ray at the same point (the directions of the wave vectors associated with both rays are



**Fig. 6** Density plot of the renormalised intensity  $S_z/S_0$  obtained with the FDTD method (a) and our ray-tracing method (b). The black dashed line delimits a domain  $\mathcal{R}$  where the typical relative error between the FDTD solution and the ray-tracing solution is more than 25%.

different since we have taken into account ray deflection). Had we neglected the deflection of the extraordinary rays – as in the Jones method – no such interference would have been visible.

However, some differences between the ray-tracing and FDTD method can be seen in the small region  $\mathcal{R}$  delimited by the black dashed line of Fig. 6. This region was numerically obtained by searching for all points where the relative error between the FDTD solution and ray-tracing solution was more than 25%. In this region, a sharp boundary between low and high intensity regions can be seen in the ray-tracing simulation, while the FDTD simulation is associated with a much smoother solution. This sharp boundary corresponds to a caustic, whose shape is similar to the one described schematically in Fig. 4. The sharp increase of intensity is due to an artificial divergence of the electric and magnetic field on the caustic itself, where the geometrical spreading  $q$  can be shown to become zero.<sup>24</sup> Since no such divergence is present in the exact solution of Maxwell's equations, this means that our method is highly inaccurate near caustics – a problem which is common to all ray-based methods.<sup>24</sup>

Nevertheless, the good agreement between our method and the FDTD method is quickly retrieved outside the domain  $\mathcal{R}$ , whose extent is rather limited. This can be directly confirmed by looking at the horizontal and vertical profiles of the  $S_z/S_0$  field. Two such profiles are presented in Fig. 7. In these graphs, the intersection between the profile lines and the region  $\mathcal{R}$  is represented by gray areas. At the center of these gray areas, the divergence of  $S_z$  can be clearly seen, while outside these gray areas, the curves associated with the ray-tracing solution quickly converge to the curves associated with the FDTD solution. In particular, good agreement is obtained inside the caustic domain (but sufficiently far from the caustic itself), where multiple extraordinary rays contribute to the local value of the Maxwell fields (as depicted in Fig. 4).

Up until this point, all our results were associated with a transverse periodicity  $P/2 = 10$   $\mu\text{m}$ , as indicated in Table 1. Since this periodicity corresponds to the typical length over which the director field varies, the associated amplitude for the smallness parameter introduced in Section 2.1 is





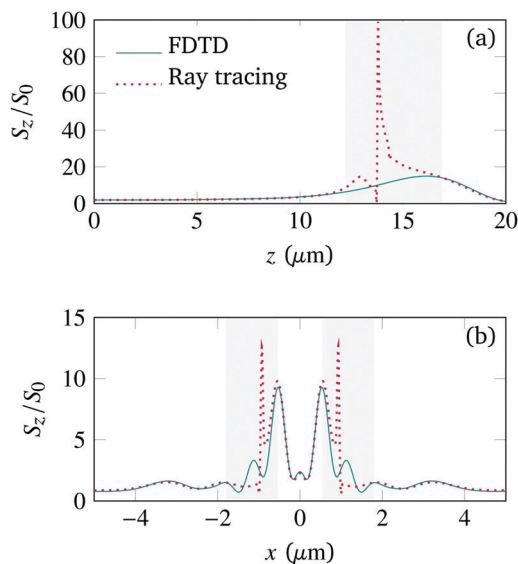


Fig. 7 (a) Vertical profile of  $S_z/S_0$  over the line  $x = 0 \mu\text{m}$ . (b) Horizontal profile of  $S_z/S_0$  over the line  $z = 19.5 \mu\text{m}$ . The legend of (a) also applies for (b). The gray regions correspond to the intersection of the domain  $\mathcal{R}$  of Fig. 6b with the profile line.

$|\eta| \equiv \pi\lambda/P \approx 0.15$ . To determine how the accuracy of our method varies with  $|\eta|$ , we reproduced the same numerical experiments as above with different values of pitch, while keeping the other parameters constant and using a scaled mesh of dimensions  $\{P/2, P\}$  in the  $\{x, z\}$  directions.

Whatever the value of the cholesteric pitch, we found that the typical lateral extent of the branches defining the domain  $\mathcal{R}$  is always around  $2\lambda-4\lambda$ , which means that our method allows us to localize the expansion error around the caustics, while keeping good convergence properties far from the caustics. In particular, we get an even better agreement with FDTD than in Fig. 6 and 7 when the cholesteric pitch is greater than  $20 \mu\text{m}$ , because the meshes associated with these systems are much bigger than the wavelength – and therefore much bigger than the typical lateral extent of the high-inaccuracy region  $\mathcal{R}$ .

Conversely, the agreement between FDTD and ray-tracing becomes less satisfactory for small cholesteric pitches: when  $|\eta| \equiv \pi\lambda/P = 0.3$ , the mesh size becomes comparable to the lateral extent of the high-inaccuracy region, which means that the convergence error is becoming global. This critical point corresponds to a periodicity length of  $5 \mu\text{m}$ , which corresponds here to ten times the wavelength. For even lower periodicity length, our method is not applicable anymore and a full solution of Maxwell's equations using FDTD must be envisioned.

On a similar line, we also noticed that the caustics were always appearing at a critical vertical position  $z_c$  scaling linearly with the cholesteric pitch. This scaling can be theoretically explained by directly computing the analytical expression of  $z_c$  for the system considered here:

$$z_c = \frac{Pn_{\perp}}{4\sqrt{[n_{\parallel}]^2 - [n_{\perp}]^2}} \quad (17)$$

The proof of this formula is available in Section S5 of the ESI.† Note that eqn (17) is only valid for positive birefringence (for negative birefringence, it needs to be adapted by switching the variables  $n_{\parallel}$  and  $n_{\perp}$ ). This formula can be used to determine if caustics are present or not in arbitrary birefringent slabs by replacing  $P/4$  with the typical distance  $L$  over which the director switches from a vertical orientation to a horizontal orientation. For sufficiently thin samples (thickness smaller than  $z_c$ ), caustics are not present in the birefringent slab and therefore do not “pollute” the simulated fields with a diverging amplitude.

Finally, let us conclude this section by pointing out that our improved ray-tracing method is massively faster than the FDTD method. This can be directly checked by the running times of both methods. As a typical example, the running times associated with the results of Fig. 6 and 7 are 4 s for our method and around 1 h for FDTD. These running times were obtained on a state-of-the-art desktop computer (6 multi-threaded cores cadenced at 3.5 GHz). Here, the high computational cost of FDTD is simply explained by the high density of the mesh necessary to get an accurate solution: the wavelength is much smaller than the typical size of our system, which means that a few millions of points are necessary if we impose a ratio of 75 vertices per wavelength. When a third dimension is added to the system (as in the next section), the computational cost of FDTD becomes prohibitive if the considered system is large. Since our method works well for these large systems (small expansion parameter  $\eta$ ), it can be adopted as a replacement for FDTD.

## 4 Application to the visualisation of liquid crystal droplets

In this section, we show how our method is able to predict the bright-field optical micrographs (BFOMs) of liquid crystal droplets as observed under a microscope when using unpolarised light without any polariser and analyser – something that the Jones method is unable to address. We first detail the experimental and numerical setup used, and then present and discuss our results.

### 4.1 Experimental setup

We focused on one particular type of liquid crystal droplet, namely twisted bipolar droplets obtained at the thermodynamic coexistence between the nematic and isotropic phase. Twisted bipolar droplets are characterised by their planar anchoring (the molecules prefer to align parallel to the surface of the droplet), the existence of two diametrically opposed topological defects of rank +1 (in agreement with the Poincaré–Hopf theorem applied to a sphere), and a double twist internal structure for the director field of the droplet. This last characteristic can be experimentally induced either by using a cholesteric liquid crystal (in which case the director field has a spontaneous twist of fixed handedness) or an achiral nematic liquid crystal in which twist elastic deformations cost a negligible amount of free energy in comparison to splay and/or bend



elastic deformations<sup>34</sup> (in which case the director field prefers to be twisted in order to decrease the energy of the surface defects). In the latter case, the twist can be left-handed or right-handed with a 50/50 probability since it is due to energetically-induced spontaneous symmetry breaking in an achiral system.

In our experiment, we exploited this spontaneous symmetry breaking by using a lyotropic chromonic suspension of Sunset Yellow FCF (SSY) in water with a mass fraction 29 wt%. In confined geometries filled with this mixture – such as the droplets studied here – a twist can be observed because of the giant elastic anisotropy of SSY suspensions, as reported by several authors.<sup>35–38</sup> The protocol to prepare the sample and create twisted bipolar droplets was already described in a previous article.<sup>38</sup> Briefly, an aqueous suspension of SSY was contained between two parallel glass plates separated by nylon wires of calibrated diameter 110  $\mu\text{m}$ . The glass plates of the sample were spin-coated beforehand with polyvinyl alcohol (PVA) and annealed at 120  $^{\circ}\text{C}$  in order to favor wetting of the sample plate by the isotropic phase of the SSY suspension. Once filled, the sample was sealed with UV glue and sandwiched by two transparent ovens separately regulated within 0.01  $^{\circ}\text{C}$ . A detailed description of these ovens is available in ref. 39. Note that two thin layers of glycerol were added between the sample and the ovens in order to improve the thermal contact.

The sample was observed through the objective of a Leica microscope under bright-field illumination conditions (halogen lamp producing unpolarised white light, Köhler illumination setup allowing us to uniformly light the sample, no polariser and analyser). Note that the condenser diaphragm of the microscope was closed as much as possible in order to get normal illumination on the sample (which is assumed in our numerical method). The temperatures of the ovens were adjusted to be inside the coexistence range between the nematic and isotropic phase of the SSY sample. Thanks to the surface treatment of the sample plate, the nematic domains dewetted the walls and formed droplets in the bulk of the sample. The radius of the observed droplets was then adjusted to be typically  $R \approx 25 \mu\text{m}$  by changing the temperature of the ovens while staying inside the coexistence range. By setting slightly different temperatures for the top and bottom ovens, we noticed that the droplets forming in the sample only have two possible orientations: parallel or orthogonal to the induced vertical temperature gradient. We chose to focus only on droplets with the polar axis orthogonal to the view direction by centering the sample stage appropriately.

Optical micrographs of the droplets were captured thanks to a CCD camera (C4742, Hamamatsu). Note that the incident unpolarised light was filtered using a red bandpass filter ( $\lambda \approx 633 \text{ nm}$ ) in order to optimize the contrast of the micrographs. Since our goal is to study light deviation effects in the droplets, we systematically saved for each micrograph the vertical shift of the sample stage with respect to a reference position where the droplet is well-focused.

## 4.2 Numerical setup

The first step to numerically reconstruct the optical micrographs of the twisted bipolar droplets was to compute the

director field associated with the observed SSY droplets. This was done using a trust-region finite-element minimisation (TR-FEM) of the total free energy of a spherical droplet with  $R = 25 \mu\text{m}$ . The details of this algorithm are given in another paper.<sup>12</sup> Briefly, we assume that the anchoring strength at the nematic/isotropic interface is finite, which implies that the polar defects of the twisted bipolar droplets are only virtual (*i.e.* the Frank elastic energy stays finite near these defects). This allows us to neglect variations of the scalar order parameter and write the total free energy  $F[\mathbf{n}]$  of the droplet as:

$$F[\mathbf{n}] = F_f[\mathbf{n}] + F_s[\mathbf{n}]$$

In this equation,  $F_f[\mathbf{n}]$  corresponds to the Frank free energy, whose expression – given in the previous citation – depends on the director field and on the elastic constants  $K_{1,2,3,4}$  respectively associated with splay, twist, bend, and Gauss/double twist deformations. The second term  $F_s[\mathbf{n}]$  corresponds to the contribution of the anchoring potential on the nematic/isotropic interface, and its expression is given by:

$$F_s[\mathbf{n}] = \int_S \frac{K_1}{l_a} (\mathbf{n} \cdot \mathbf{v})^2 dS$$

Here,  $l_a = K_1/W_a$  is the anchoring length and  $W_a$  is the anchoring strength. Our TR-FEM algorithm allows us to iteratively minimize a discretised version of  $F[\mathbf{n}]$  with finite elements using an efficient null space factorisation of the gradient and Hessian of the free energy and a robust calculation of the solution update which always decreases the energy and converges quadratically near a minimum of  $F[\mathbf{n}]$ . We applied this algorithm to the case of SSY droplets by using the values of the material constants given in Table 2. The resulting director field, obtained on a mesh with approximately  $2 \times 10^6$  vertices, is presented in Fig. 8.

Once the director field was computed, we used it in our ray-tracing code to propagate light through the system described in the previous section, including all the isotropic layers associated with the transparent ovens and the sample plates. Since we are only interested in the final micrographs and not in the bulk data of the Maxwell fields, we skipped step (A2.3) of our algorithm (see Section 2.4) and simply propagated forward the rays through the system using the values of the material constants in Table 2.

**Table 2** Values of the relevant material constants for the system of Section 4. The Frank elastic constants  $K_{1,2,3}$  and refractive indices  $n_{\perp, \parallel, \text{iso}}$  in the SSY suspension were measured by Zhou *et al.*<sup>29</sup> The  $K_4$  constant was estimated using the theoretical formula of Nehring and Saupe.<sup>30</sup> The anchoring length  $l_a$  at the nematic/isotropic interface was never measured in SSY so we took a similar value to that in cyanobiphenyls,<sup>31</sup> and we checked that the computed micrographs were not changing much when applying a factor 0.5–2 to this value. The values of the refractive index of the glass, glycerol and water layers were obtained from tabulated data<sup>32,33</sup>

$K_2/K_1$	$K_3/K_1$	$K_4/K_1$	$l_a$	$\lambda$	
0.161	1.43	0.58	3 $\mu\text{m}$	633 nm	
$n_{\text{glass}}$	$n_{\text{glycerol}}$	$n_{\text{water}}$	$n_{\text{iso}}$	$n_{\perp}$	$n_{\parallel}$
1.52	1.47	1.33	1.43	1.47	1.41



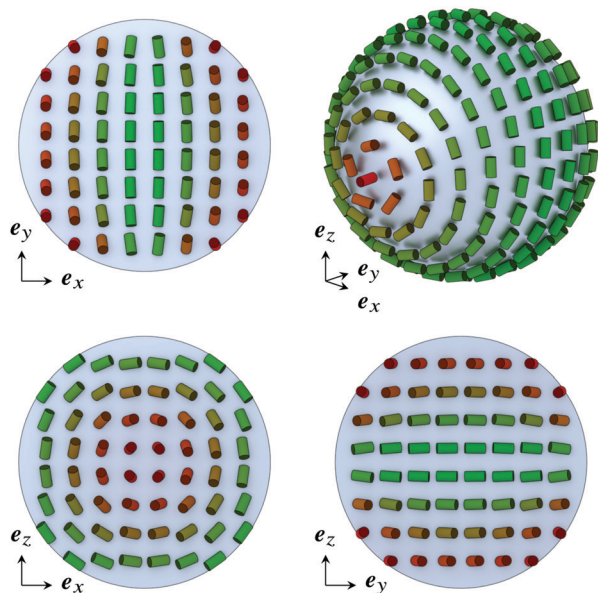


Fig. 8 Director field of an SSY droplet with  $R = 25 \mu\text{m}$  on three slice planes and on the droplet surface. Here,  $y$  is the polar axis associated with a rotational invariance and  $z$  is the direction of propagation of light in the ray-tracing simulation.

Under a real microscope, optical micrographs are obtained by propagating light through the objective to the final screen (here, the CCD image sensor). In our numerical method, we assume that the objective can be represented by an ideal lens, in which case the final screen  $\mathcal{P}$  is conjugated through the lens to a virtual plane  $\mathcal{P}'$ , which we call the back-focal plane. These planes are schematised in Fig. 9. Since we assumed that the

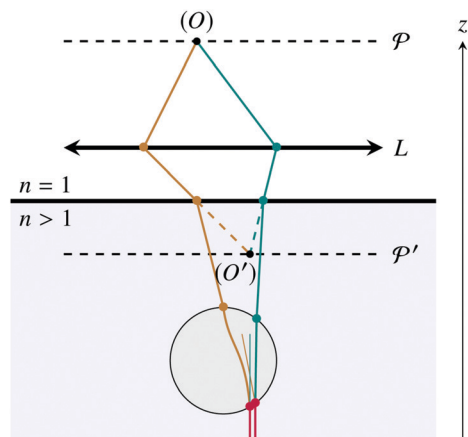


Fig. 9 In this figure, we illustrate how two different rays (brown and green trajectories, respectively associated with extraordinary and ordinary rays) are recombined at a point ( $O$ ) of the final screen  $\mathcal{P}$  after passing through the ideal lens  $L$ . Since this lens is assumed ideal, the intensity data at point ( $O$ ) is perfectly equivalent to the intensity data at the conjugate point ( $O'$ ) on the back-focal plane  $\mathcal{P}'$ . For this reason, we calculate micrographs by propagating backward the rays to this virtual plane (dashed trajectories). Here, we assumed that the droplet is embedded in a single isotropic medium, but our approach can be easily generalized to more complex setups.

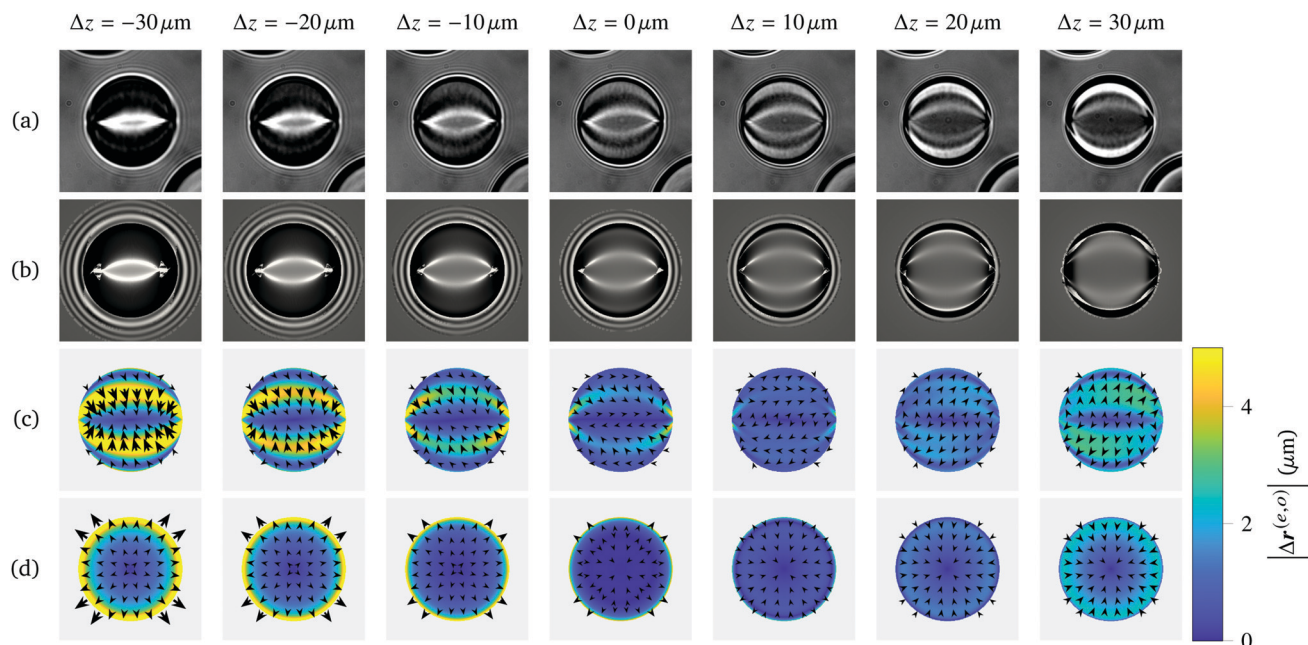
lens is ideal, the final intensity field on the plane  $\mathcal{P}$  is perfectly equivalent (with a scaling transformation) to the intensity field on the virtual plane  $\mathcal{P}'$ , which can be obtained by propagating backward the output rays as if the whole space was filled with air (dashed trajectories in Fig. 9). For this reason, we calculated the optical micrographs by combining all contributions of the ray families on the back-focal plane after propagating the rays forward through the system and backward to the virtual plane  $\mathcal{P}'$ . Since an input polarisation must be specified in our method, the final BFOM is obtained by averaging incoherently the simulated POMs over all possible input polarisations.

### 4.3 Results and discussion

A few observed and simulated BFOMs are presented in Fig. 10a and b for different vertical positions of the back-focal plane  $\mathcal{P}'$ . The same contrast setting ( $S_z/S_0$  between 0.5 and 1.5) was applied to all micrographs for ease of comparison. As can be seen, the simulated micrographs correctly predict the existence of the almond-shaped high intensity region at the center of the droplet, which opens up and expands when the back-focal plane is moved upward. Let us remark that our first attempt to simulate the BFOMs of Fig. 10 was unsuccessful because we initially neglected the presence of all the additional isotropic layers associated with the sample plates and the transparent ovens of the experimental setup: in this simplified situation, the simulated micrographs were much more uniform (inexistent almond-shaped high intensity region) and therefore very different from the observations. The fact that the micrographs have a much sharper contrast when including the isotropic layers in the simulation can be interpreted as an amplification of the deflection effects on the back-focal plane  $\mathcal{P}'$  due to light refraction at the boundaries of the isotropic layers (see Fig. 9).

Although the agreement between the simulated and observed BFOMs is good, some discrepancies are clearly visible, especially outside the droplet and near its boundary. First, it is easy to see that the simulated interference rings outside the droplet are thicker and of higher contrast than in the experimental images. This discrepancy is probably due to the fact that we neglected all reflected rays on the boundary of the droplet. Second, optical artefacts are visible near the polar defects (left and right side of the droplet) when  $\Delta z < 0$  in Fig. 10. These artefacts are associated with the presence of caustics, where the reconstructed Maxwell fields are highly inaccurate as shown in the previous section. Last, the crescent-shaped high intensity regions visible in the experimental micrographs when  $\Delta z > 0$  are much thinner in the simulated micrographs. This discrepancy is not due to the presence of caustics (which can be directly checked in our result files by counting the number of rays arriving at one point of the micrograph); the most likely source of error is that the effective birefringence  $\Delta n_{\text{eff}}$  introduced in Section 2.3 is vanishingly small near the boundary of the droplet,





**Fig. 10** Experimental (a) and simulated (b) BFOMs of a SSS droplet with  $R = 25 \mu\text{m}$ , for different vertical shift  $\Delta z$  of the back-focal plane  $\mathcal{P}'$  with respect to a reference position associated with a well-focused droplet (fourth column). The two bottom rows represent the deflection maps of the extraordinary (c) and ordinary (d) rays. The color scale is associated with the amplitude of deflection. Note that the Jones method is unable to simulate these BFOMs since it always predicts a transmission of 1 under bright-field illumination conditions.

where the director is almost parallel to the propagation axis. This implies that one of the main assumptions of our code (Mauguin number much bigger than 1) is broken near the droplet boundary, which explains the difference between the simulated and observed BFOMs near the crescent-shaped high intensity regions described above.

Nevertheless, we checked that the Mauguin number is reasonably high enough ( $\geq 10$ ) at the center of the droplet and that the WKB expansion parameter  $|\eta| \approx 1/(2k_0R)$  is small enough ( $\sim 0.002$ ), which explains why our ray-tracing method is robust enough to qualitatively predict the correct alternation of dark and bright bands in all micrographs. It should be noted that additional insight into the structure of the micrographs can be obtained by looking at the deflection maps of the extraordinary and ordinary rays, defined as the difference  $\Delta r^{(\alpha)}$  between the actual end point of a ray  $r^{(\alpha)}$  ( $\alpha = e$  or  $o$ ) and the virtual end point which would be obtained if there were no deflection of this ray. These deflection maps are plotted in the two bottom rows of Fig. 10. The ordinary deflection map always has rotational symmetry (which is expected since the ordinary index is constant inside the spherical droplet) and points outward for  $\Delta z < 0$  and inward for  $\Delta z > 0$ , which explains the presence of interference rings outside the droplet when  $\Delta z < 0$  and the dark bands near the boundary of the droplet when  $\Delta z > 0$ . The extraordinary deflection map has  $C_2$  symmetry (as expected because of the bipolar and twisted nature of the director field) and points inward for  $\Delta z < 0$  and outward for  $\Delta z > 0$ , which explains why the almond-shaped high intensity region opens up and expands when  $\Delta z$  increases. Finally, we should clarify exactly what we meant by a

“well-focused droplet” when defining the reference position of the back focal plane  $\mathcal{P}'$  ( $\Delta z = 0$  in Fig. 10); here, “well-focused” simply means that the average deflection amplitude of the ordinary rays is minimal (as can be visually checked in Fig. 10d).

## 5 Conclusion

To summarize, we presented an improved ray-tracing method allowing one to fully reconstruct the phase, polarisation and amplitude of the optical field inside a uniaxial birefringent medium. We demonstrated that this method is extremely fast in comparison to a full resolution of Maxwell's equations, and showed that the calculated solutions are accurate far from caustics, which only formed when the sample thickness is greater than a critical value. Finally, we showed how our method can be used to simulate bright-field optical micrographs of birefringent samples as seen under a microscope, with good agreement with experimental micrographs. Our method is thus able to address one of the main limitation of the Jones method, namely the inability to take into account ray deflection and simulate light propagation under bright-field illumination conditions. Contrary to the numerical methods mentioned in Section 1 (finite difference time domain, beam propagation method, eikonal differential equation...), our method is also able to support complex setups with thick isotropic layers. The main reason for this is that we do not have to solve a set of partial differential equations, we only have to propagate rays and reconstruct the electric fields along these rays.



Note that the simplicity and effectiveness of our method are largely due to the fact that we neglected any exchange of energy between the extraordinary and ordinary modes. This assumption is only valid if the Mauguin number is much bigger than 1. As discussed in Sections 3 and 4, this was mainly the case for the systems studied here. In the future, it would be interesting to further improve our numerical method by relaxing this assumption and deriving general transport equations for the amplitude of the extraordinary and ordinary modes outside the adiabatic regime. Such a generalised method could then be applied to highly chiral birefringent systems, in which the twist of the polarisation is non-negligible everywhere in the sample.

On a parallel note, although our method was mainly applied to the calculation of optical micrographs, one could imagine a number of other applications. For example, our method could be used to analyze the diffraction patterns of the LC-based diffraction gratings mentioned in the introduction, by setting the final target plane of our method to the output plane of the LC layer, and then applying the usual far-field formula. The optical properties of flat LC diffractive lenses<sup>40</sup> could also be analyzed either by using the ray trajectories computed by our method or by using the reconstructed fields on the output surface of the LC layer.

## Conflicts of interest

There are no conflicts to declare.

## Acknowledgements

The authors warmly thank P. Oswald for giving access to the experimental setup used in this paper. Funding is acknowledged from the ARSS (Javna Agencija za Raziskovalno Dejavnost RS) through grants P1-0099 and L1-8135, and from the European Union's Horizon 2020 programme through the Marie Skłodowska-Curie grant agreement No. 834256.

## References

- P. Oswald and P. Pieranski, *Nematic and cholesteric liquid crystals: concepts and physical properties illustrated by experiments*, CRC Press, 2006.
- P. Oswald and P. Pieranski, *Smectic and columnar liquid crystals: concepts and physical properties illustrated by experiments*, CRC Press, 2006.
- I.-C. Khoo, *Liquid crystals: physical properties and nonlinear optical phenomena*, Wiley-Interscience, Hoboken, N.J., 2nd edn, 2007.
- M. Humar, M. Ravnik, S. Pajk and I. Mušević, *Nat. Photonics*, 2009, **3**, 595–600.
- P. J. Ackerman, Z. Qi, Y. Lin, C. W. Twombly, M. J. Laviada, Y. Lansac and I. I. Smalyukh, *Sci. Rep.*, 2012, **2**, 414.
- I. Nys, K. Chen, J. Beeckman and K. Neyts, *Adv. Opt. Mater.*, 2018, **6**, 1701163.
- M. Jiang, H. Yu, X. Feng, Y. Guo, I. Chaganava, T. Turiv, O. D. Lavrentovich and Q.-H. Wei, *Adv. Opt. Mater.*, 2018, 1800961.
- Y. Tabe and H. Yokoyama, *Langmuir*, 1995, **11**, 699–704.
- I. Smalyukh, *Mol. Cryst. Liq. Cryst.*, 2007, **477**, 23–41.
- T. Lee, R. P. Trivedi and I. I. Smalyukh, *Opt. Lett.*, 2010, **35**, 3447–3449.
- M. Ravnik and S. Žumer, *Liq. Cryst.*, 2009, **36**, 1201–1214.
- G. Poy, F. Bunel and P. Oswald, *Phys. Rev. E*, 2017, **96**, 012705.
- G. Posnjak, S. Čopar and I. Mušević, *Sci. Rep.*, 2016, **6**, 26361.
- U. Mur, S. Čopar, G. Posnjak, I. Mušević, M. Ravnik and S. Žumer, *Liq. Cryst.*, 2017, **44**, 679–687.
- F. Grandjean, *Bull. Soc. Fr. Mineral.*, 1919, **42**, 42.
- A. F. Oskooi, D. Roundy, M. Ibanescu, P. Bermel, J. Joannopoulos and S. G. Johnson, *Comput. Phys. Commun.*, 2010, **181**, 687–702.
- A. Joets and R. Ribotta, *Opt. Commun.*, 1994, **107**, 200–204.
- J. A. Kosmopoulos and H. M. Zenginoglou, *Appl. Opt.*, 1987, **26**, 1714.
- H. M. Zenginoglou and J. A. Kosmopoulos, *Appl. Opt.*, 1989, **28**, 3516.
- M. Sluijter, D. K. G. de Boer and J. J. M. Braat, *J. Opt. Soc. Am. A*, 2008, **25**, 1260.
- M. Sluijter, D. K. de Boer and H. P. Urbach, *J. Opt. Soc. Am. A*, 2009, **26**, 317.
- G. D. Ziogos and E. E. Kriezis, *Opt. Quantum Electron.*, 2008, **40**, 733–748.
- G. Panasyuk, J. Kelly, E. C. Gartland and D. W. Allender, *Phys. Rev. E: Stat., Nonlinear, Soft Matter Phys.*, 2003, **67**, 041702.
- O. Runborg, *Commun. Comput. Phys.*, 2007, **2**, 827–880.
- R. B. Dingle and R. Dingle, *Asymptotic expansions: their derivation and interpretation*, Academic Press, London, 1973, vol. 48.
- H. L. Ong, *J. Appl. Phys.*, 1988, **64**, 614–628.
- F. Lekien and J. Marsden, *Int. J. Numer. Meth. Eng.*, 2005, **63**, 455–471.
- A. Taflove and S. C. Hagness, *Computational electrodynamics: the finite-difference time-domain method*, Artech house, 2005.
- S. Zhou, Y. A. Nastishin, M. M. Omelchenko, L. Tortora, V. G. Nazarenko, O. P. Boiko, T. Ostapenko, T. Hu, C. C. Almasan, S. N. Sprunt, J. T. Gleeson and O. D. Lavrentovich, *Phys. Rev. Lett.*, 2012, **109**, 037801.
- J. Nehring and A. Saupe, *J. Chem. Phys.*, 1971, **54**, 337–343.
- S. Faetti and V. Palleschi, *Phys. Rev. A: At., Mol., Opt. Phys.*, 1984, **30**, 3241.
- M. Rubin, *Sol. Energy Mater.*, 1985, **12**, 275–288.
- J. Rheims, J. Köser and T. Wriedt, *Meas. Sci. Technol.*, 1997, **8**, 601–605.
- R. D. Williams, *J. Phys. A: Math. Gen.*, 1986, **19**, 3211.
- L. Tortora and O. D. Lavrentovich, *Proc. Natl. Acad. Sci. U. S. A.*, 2011, **108**, 5163–5168.
- J. Jeong, Z. S. Davidson, P. J. Collings, T. C. Lubensky and A. G. Yodh, *Proc. Natl. Acad. Sci. U. S. A.*, 2014, **111**, 1742–1747.
- K. Nayani, R. Chang, J. Fu, P. W. Ellis, A. Fernandez-Nieves, J. O. Park and M. Srinivasarao, *Nat. Commun.*, 2015, **6**, 8067.
- J. Ignés-Mullol, G. Poy and P. Oswald, *Phys. Rev. Lett.*, 2016, **117**, 057801.
- P. Oswald and A. Dequidt, *Phys. Rev. Lett.*, 2008, **100**, 217802.
- P. Valley, D. L. Mathine, M. R. Dodge, J. Schwiegerling, G. Peyman and N. Peyghambarian, *Opt. Lett.*, 2010, **35**, 336–338.

